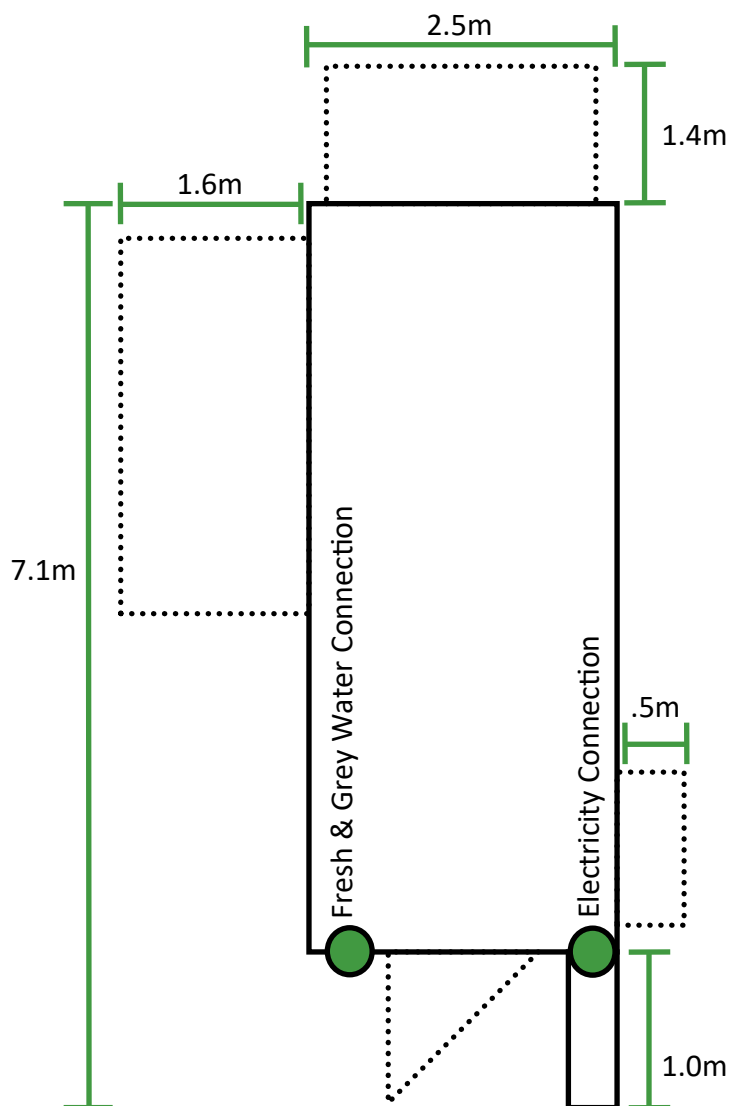


Wilka

THALTA

SITE KITCHEN



SPECIFICATIONS:

Length = 7.1m
Width = 2.5m
Open Width = 4.6m
Height = 2.9m
Weight = 3.6T

RELOCATION:

Site Kitchen is relocated using a Tilt Tray Truck and is ideally placed on a concrete slab or low piers with mains utility supply access

UTILITY SUPPLY:

Electricity
3 Phase or 15 Amp
Mains Power Supply required
Fresh Water
Mains Water Supply required
Grey Water
Mains Sewerage Supply required
LPG Gas
x3 90kg Tanks fitted (Gas supplied)

Wilka Thalta means
Hungry Kangaroo in
Paakantyi language, our totem.



Wilka Thalta is a mobile commercial kitchen operation built up of Food Trucks & on-site Canteens servicing the Construction Industry & Public/Private Events sectors predominantly. Being full commercial kitchens that operate off-grid (if need be) allows us to operate virtually anywhere for private use, as well as attend public events, shows, festivals & markets.

We pride ourselves on our customers experiences being exceptional as a whole, focusing on the quality, service & cleanliness of our facilities, products & staff. Our great versatility in food offerings means we'll always have something for everyone as opposed to many on the market who focus on one particular style of food service or cuisine.

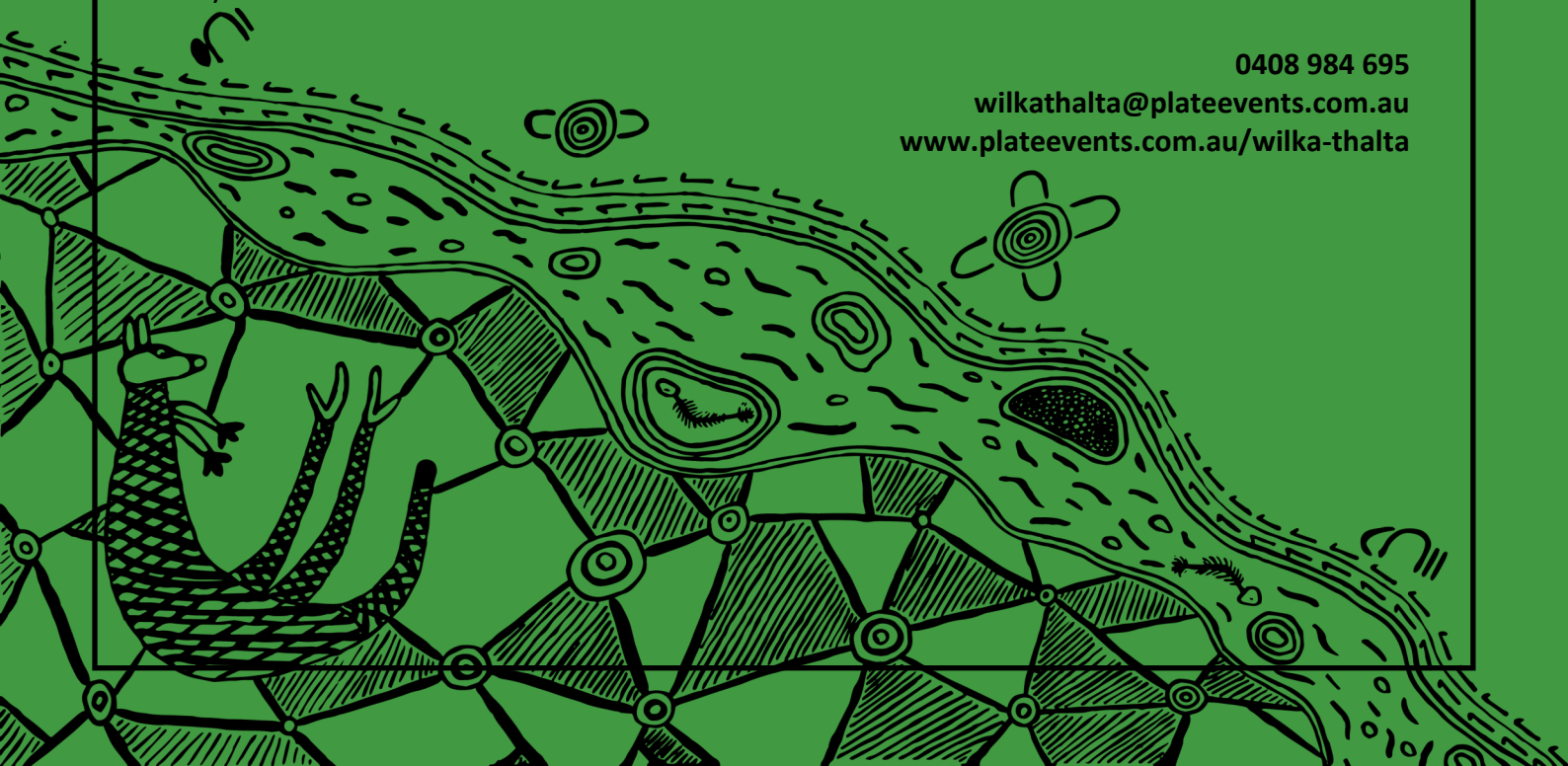
Our fully trained, professional Hospitality staff are all accredited with the required training to fulfil their roles beyond customers expectations, delivering a truly remarkable experience each and every time.

The **Wilka Thalta Site Kitchen** is a transportable semi-permanent commercial kitchen that can be relocated on construction sites for long term projects as a day to day canteen facility for staff & contractors serving up breakfast, smoko, lunch & even dinner for up to 1,000 people a day with our set menu.

0408 984 695

wilkalthalta@plateevents.com.au

www.plateevents.com.au/wilka-thalta



Wilka

THALTA

SITE KITCHEN



We are a **100% Aboriginal** owned & operated Company, Local to Western Sydney



The logo features the word 'Wilka' in a large, black, cursive script. To its right is a stylized flower icon with five petals and a circular center. Below 'Wilka' is the word 'THALTA' in a bold, black, sans-serif font. At the bottom, the words 'SITE KITCHEN' are written in a bold, green, sans-serif font.

SITE KITCHEN EQUIPMENT				
	Type	Details	Model	Power
G A S	Oven	<i>Cook-Rite</i> 6 Burner Gas Cooktop w/ Static Oven LPG	AT80G6B-0	6 x 28Mj
	Deep Fryer	<i>Cook-Rite</i> 4 Burner Fryer 27L	ATFS-50-LPG	4 x 28Mj
E L E C T R I C	Exhaust	<i>CFM</i> Air Systems	MCV400-4E	0.49kW 2.2A
	Air Conditioner	<i>Mitsubishi</i> Heavy Industries Inverter	SRC5025A-W	5800kW 6.3A
	Bench Fridge x2	<i>Polar</i> Refrigeration 3 Door	DL818-A-02	315 W x2 1.9A x2
	Bench Freezer	<i>Anvil Aire</i> Single Door 200L	FBFG1201	174W
	Display Cabinet	<i>Koldtech</i> 3 Shelf Cold Display Cabinet	SQRCD-9 Y719F12A / E-274707	840W
	Dishwasher	<i>Norris</i> Café Mate	559005025 IP no. X1	3600W 1.5A
	Hot Water System	<i>Dux</i> Under Bench 25L	25S123 / 25S136	2.4kW
	Bain Marie	<i>Devanti</i> 3 ½ Pan	CBM-BMC3-SS	1000W
	Food Warmer x2	<i>Devanti</i> 4 Shelf	CFW-580M-S1	1000W x2
	Microwave Oven	<i>Anko</i>	P11034AL-B6	1500W
	Grill Toaster	<i>Anko</i>	LW8530A	2000W
	Toaster	<i>Anko</i>	LD-T7006A	1600W
	Coffee Machine	<i>Nuova Simonelli</i> Aurelia II 3 Group Handle	05000893	5000W
	Coffee Grinder	<i>Victoria Arduino</i> Mythos I 1.3kg		800W
	POS System	<i>Square</i> Register		45W
	Interior Lighting	x4 LED Ceiling Lights		
Exterior Lighting	x3 LED Flood Lights			
Signage	x2 LED Neon Lights			
Security	x7 Cameras + Hard Drive			

MOBILE COOLROOM			
Type	Details	Model	Power
Coolroom	<i>Eidis</i> Refrigeration 68 Slide In Unit	13757	1940W 5.5A